

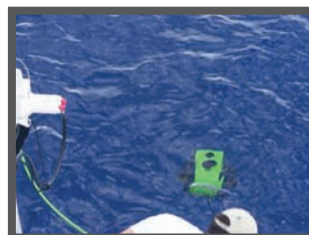
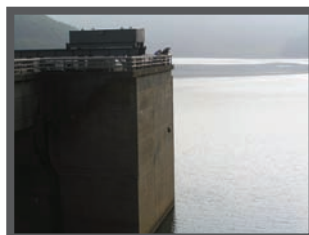
LBV300-6 MiniROV Systems

The SeaBotix LBV300-6 Series offers unprecedented pulling power for long line penetrations and higher currents at depth.

- 300 meter (1,000ft) depth rating and tether lengths to 2,000 meters (6,000ft)
- 6 Powerful Brushless DC thrusters with individual oil-compensators
- 4-axis maneuverability including 4 forward thrusters
- Ultra small diameter high strength, durable, low drag tether
- Video and data transmission over high quality fiber optics and high resolution low light color camera
- 270° range of view with high intensity LED array tracking camera
- Optional lightweight Launch and Recovery System (lwLARS) for simplistic tether/vehicle management

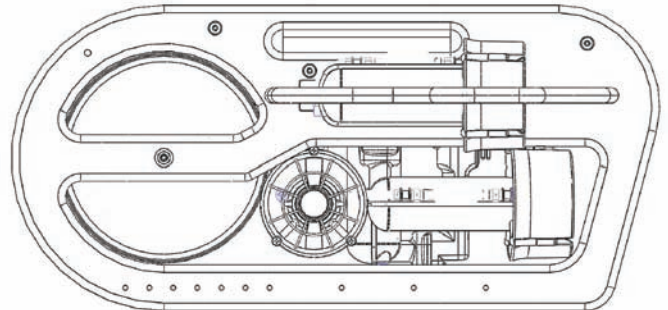


With optional tether lengths to 2,000 meters, the LBV300-6 is unmatched in its capability to perform incredibly long internal pipe inspections in confined spaces. Data quality is exceptional with fiber optic video and sensor data. The available lightweight Launch and Recovery System (lwLARS) offers a motorized reel, power sheave, level-wind, and line counter for easy 1-2 person portability and operation in the most demanding applications.



General

Depth Rating:	300m (1,000ft)
Length:	530mm (21in)
Width:	484mm (19.1in)
Height:	254mm (10in)
Diagonal:	546mm (21.5in)
Weight in air:	13kg (28.7lbs)



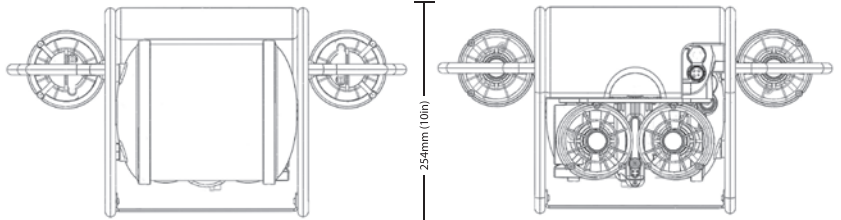
530mm (21in)

Thrusters/Performance

Configuration:	4 forward, 1 vertical, 1 lateral
Motor Type:	Brushless DC direct drive
Bollard Thrust:	4.9kgf (10lbf) each
Speed at Surface:	3.5 knots (1.54m/sec)
Max Operating Current:	2.5 knots (1.3m/sec)

Cameras/Lighting

Camera:	520 line High resolution color
Range of View:	270 Degrees
Focus:	Manual (90mm to infinity)
Format:	NTSC or PAL
Transmission Type:	Fiber optic
Lighting:	Internal 700 Lumen LED Tracks color camera



254mm (10in)

484mm (19.1in)

Control System

Configuration:	Rugged case with weatherproof monitor and removable operator control unit
Monitor:	38cm (15") LCD
Power Requirement:	3,000 watts, 100-240 VAC
Safety:	Isolated input, circuit breaker, LIM, leak monitor Meets & exceeds AODC 035 "Code of Practice for the Safe use of Electricity in Water"
Auto Functions:	Depth, heading, trim
Video Overlay:	Depth, heading, lights, thruster gain, turns counter, camera angle, time, date and user programmable characters

Tether/Reel

Diameter:	8mm (0.3in) nominal
Length:	350m (1,150ft) standard
Working Load:	100kgf (220lbf)
Breaking Strength:	700kgf (1,543lbf)
Buoyancy:	Neutral in fresh, slightly positive in seawater
Reel:	Heavy duty with slip ring

Options

Tether Lengths:	150-2,000m (500-6,000ft)
Grabber:	Three jaw, interlocking small, interlocking large, parallel, cutter
Sonar:	Scanning, profiler
Tracking:	USBL positioning system
Console:	Integrated Navigation and Control Console
Lights:	Multiple head ultra bright LED
Other:	lwLARS, laser scaling, zoom camera, thickness gauge, CP and more

